

 awningdepot

THE
BABYLON
PERGOLA



NOW OFFERING FULLY CUSTOM SIZING

Babylon is a premium motorised aluminium pergola system designed with robust features to withstand year-round weather conditions. With its wide double-layer overlapping louvres and sturdy 150mm square posts, this system ensures exceptional stability and durability. Additionally, it is powered by a waterproof IP67-rated motor with 24V operation offering reliable and safe performance in any setting.

Its sleek, modern design, combined with weatherproof and ventilation features, creates an ideal solution for enhancing any outdoor space including hospitality venues.

Our standard-size pergolas can now be fully customised to your required dimensions for an additional charge to the standard prices listed below.

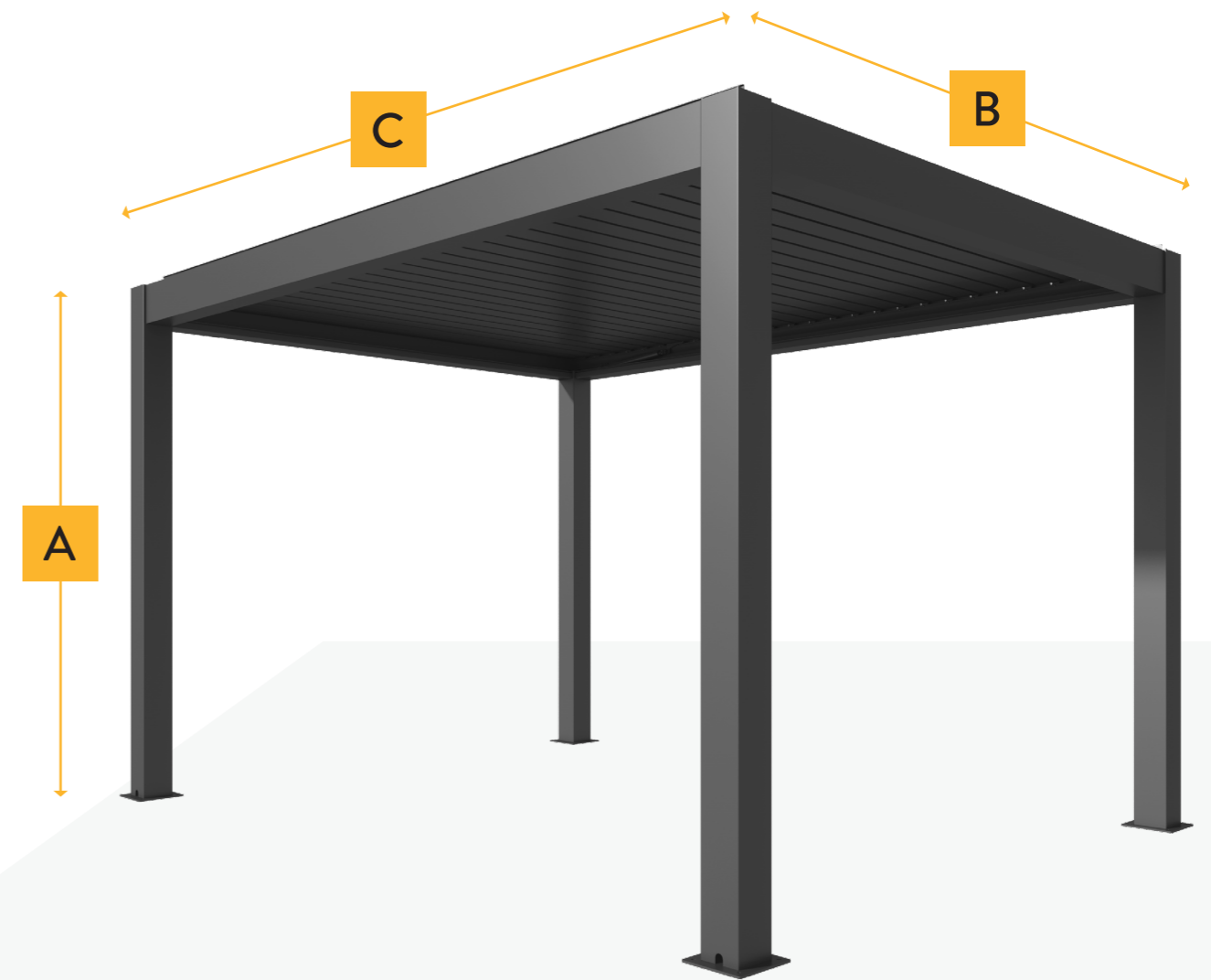
Please contact our team if you're unsure whether your required size can be customised from our standard sizes.

STANDARD MODELS	PRICE
3M X 4M / 3024mm x 4065mm	£2500 +VAT
3M X 5M / 3024mm x 5060mm	£2900 +VAT
4M X 5M / 4065mm x 5060mm	£3300 +VAT
4M X 6M / 4065mm x 5838mm	£3700 +VAT

*Dimensions: In parentheses (mm) show the outside-to-outside distance between pergola base plates.

OPTIONS	CUSTOMISATION	PRICE
A Height Adjustment	Per Leg Adjustment	£50 +VAT
B Custom Width	In 14.2cm Increments	£400 +VAT
C Custom Projection	Any Required Size	£700 +VAT
Full Customisation	All Three Combined	£1100 +VAT

* Disclaimer: Customisations and adjustments may result in slight differences from the original preboxed condition.



AVAILABLE IN ONE
STANDARD COLOUR

RAL 7016
ANTHRACITE
GREY

OPTIONS

- **Installation:**
 - Free Standing
 - Wall Mounted
- **Operation:** Motorised only

TECHNICAL INFO

- **Hidden drainage system**
- **High load-bearing strength** - it can withstand up to 80kg/m²
- **Strong wind resistance** rated at 120km/h
- **Louvers:**
 - Anti UV
 - Weatherproof
 - Open up to 90 degrees

ADDITIONAL EXTRAS

- Manual Zipper Blind
- Fixed Shutter
- Heater with or without Bluetooth speaker (see pages 32 & 33)



EXTENTIONS

Extensions beyond standard sizes, is available using additional fabricated steel posts where needed. Contact our team for pricing.

- 3M X 8M**
- 3M X 10M**
- 4M X 10M**
- 4M X 12M**



ZIP SYSTEM MOORGATE



AVAILABLE IN ONE
STANDARD COLOUR

RAL 7016
ANTHRACITE
GREY

TECHNICAL INFO

- **Frame:** Frame made from aluminium extrusion with aluminium parts and components
- **Frame Colour:** Available in anthracite grey as standard
- **Fabric:** 5 colours of zip screen available
- **Operation:** Motorised using powerful 50nm motor or manual
- **Size:** Width 1m to 4m | Height from 1m to 2.8m

PRICE LIST WILL INCLUDE

- ✓ Motor with remote control handset if motorised
- ✓ Zip screen

MOORGATE MANUAL ZIP SYSTEM

ZIP SCREEN

		WIDTH			
PROJECTION		1000mm	2000mm	3000mm	4000mm
	1000mm	£641	£683	£755	£797
	2000mm	£654	£696	£768	£810
	2800mm	£667	£709	£781	£823

MOORGATE MOTORISED ZIP SYSTEM

ZIP SCREEN

		WIDTH			
PROJECTION		1000mm	2000mm	3000mm	4000mm
	1000mm	£691	£733	£805	£847
	2000mm	£704	£746	£818	£860
	2800mm	£717	£759	£831	£873

WINDSOR HEATERS

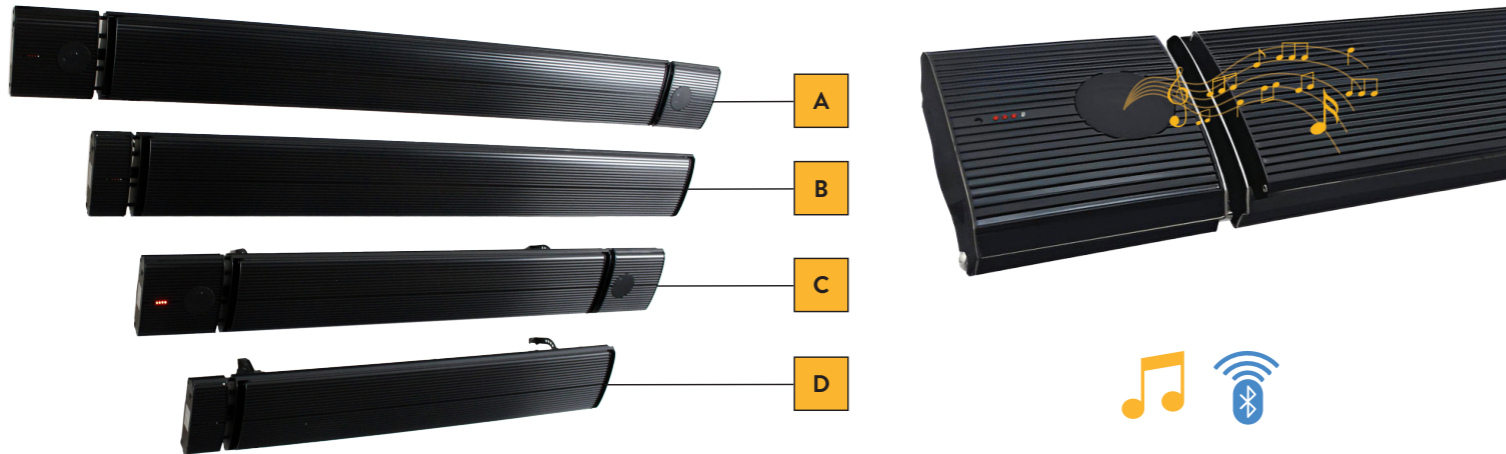
KEY FEATURES

- ✓ Timer on/off 0:00~ 24:00
- ✓ 2 power setting: 75% & 100% power
- ✓ Remote & smart app function
- ✓ 5 seconds fast heating
- ✓ No noise
- ✓ No light no dry
- ✓ Durable with a long life
- ✓ Low carbon energy-saving
- ✓ Convenient and flexible



Model	Dimensions (mm)	POWER (W)	PRICE
BS-IR-1.8	1160*180*77	2200	£340

BATTERSEA HEATERS



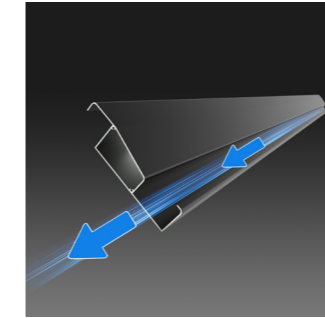
	Model	Dimensions (mm)	POWER (W)	COVER AREA (M2)	PRICE	
🎵	A	BS-SP-2.4	1870*189*67	2400	25-32	£330
	B	BS-2.4	1595*189*67	2400	25-32	£260
🎵	C	BS-SP-1.8	1370*189*67	1800	18-25	£280
	D	BS-1.8	1095*189*67	1800	18-25	£220

TECHNICAL FEATURES

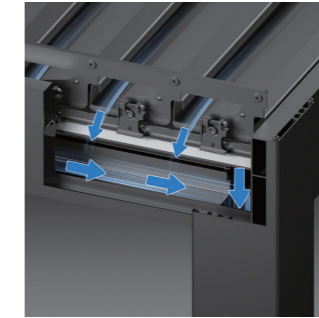
ADVANCED GUTTER SYSTEM

Babylon's design incorporates an innovative hidden drainage system, rainwater is efficiently diverted through blade grooves into an internal gutter, which channels water down the posts and out at the base, ensuring complete waterproof protection.

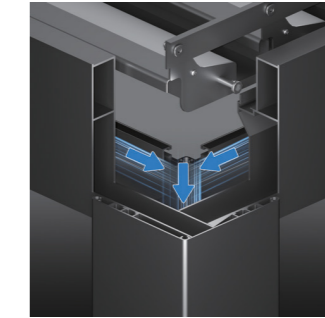
This intelligent design not only separates water drainage and electrical wiring, ensuring maximum safety and efficiency but it also keeps outdoor spaces dry and usable during rainy weather.



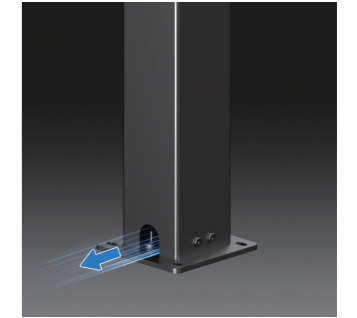
Louvre grooves facilities water diversion



Water flows into the hidden drainage system



Water is routed through the post



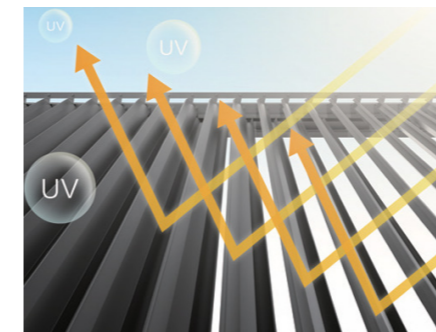
Water exits at the base of the post

LOAD-BEARING STRENGTH

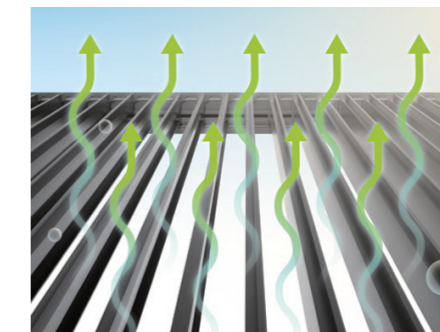
The Babylon Pergola is built to withstand more than just wind and rain—it's also capable of bearing snow loads up to 80kg/m², making it a practical solution for regions with harsh winters. Whether your outdoor space is exposed to snowfall or windy conditions, this pergola maintains its structural integrity, offering reliable performance year-round.

WEATHERPROOF PERFORMANCE

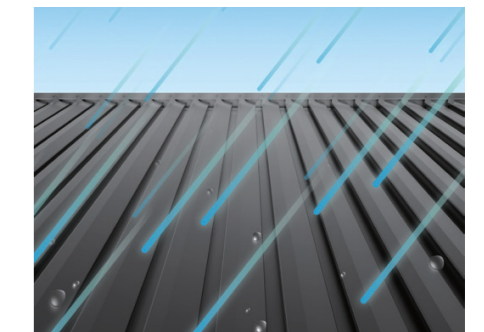
Designed to meet the demands of a variety of weather conditions, the Babylon Pergola features anti-UV panels and rotatable louvres that open up to 90 degrees, allowing complete control over sunlight and airflow with the touch of a button. Its strong wind resistance, rated at 120 km/h (above the Beaufort Scale 10), ensures stability in strong winds, making it ideal for the variable weather conditions across the UK.



UV resistant



Breathable



Weather-resistant



BBSA®
BRITISH BLIND & SHUTTER ASSOCIATION



UNIT 19, HORNET CLOSE, PYSONS ROAD INDUSTRIAL ESTATE, BROADSTAIRS, CT10 2YD
TEL: 01843 821 905 | EMAIL: INFO@AWNINGDEPOT.CO.UK

WWW.AWNINGDEPOT.CO.UK