

awningdepot



# *Victoria*

REVAMPED





PROUDLY MADE &  
ASSEMBLED IN THE UK

## ABOUT US

Awning Depot is a UK-based manufacturer specializing in custom-designed awnings and canopies. Over the years, we have expanded our product range to include various outdoor living solutions such as pergolas, zip systems, and more. In addition to our product range, we supply motors and traditional awning parts to the industry, catering to both modern and classic designs.

Beyond our competitive pricing, what truly sets us apart, is our comprehensive sign-writing service and bespoke manufacturing process. Every product is meticulously tailored to complement the architectural style and functional needs of your clients, ensuring a perfect blend of form and function for every project.

## WHY CHOOSE US?



Quality Assurance



Affordability



Fast Turnaround



UK Warehouse Stock



Technical Support



In-house Steel Fabrication





# INDEX

INTRODUCTION .....	4-5
IMPROVEMENTS .....	6-11
COMPONENT BREAKDOWN .....	12-13
COMPONENT SPECIFICATIONS .....	14-23
VICTORIA REVAMPED   With fixed hinge .....	24-25
VICTORIA REVAMPED   With stainless steel slider .....	26-27
OPTIONS & ADD-ONS .....	28
OPERATION OPTIONS .....	29
SIGNWRITING .....	30-31



# INTRODUCING THE NEXT GENERATION OF VICTORIA

“For over 150 years the Traditional Victorian awning has graced prestigious high streets in cities like London and charming alleys in the smallest Cotswold villages. Its classic design has been a hallmark on shopfronts across the United Kingdom for generations, evoking a sense of tradition and history. This timeless symbol of British heritage remains beloved for its elegance and character.

Throughout my 28-year career in the industry, I have removed countless Victorian awnings from shop facades, often replacing them with modern motorised folding-arm models. While these contemporary alternatives boast remarkable functionality, they often lack the authentic charm that complements historic buildings, particularly in heritage areas.

Intrigued by this trend, I began asking my clients why they opted for modern replacements and I carefully documented their pain points. Over time, I also noticed that awning suppliers started phasing out traditional Victorian designs, primarily due to the complexity of their manufacturing, installation, and operation - factors that significantly drove up costs, making them increasingly difficult to sell.

This inspired me to create Victoria Revamped, a product born from over 5 years of development. Drawing on my extensive experience, I've reimaged the classic Victorian awning—preserving its timeless beauty while incorporating modern advancements. Victoria Revamped improves cost, simplifies manufacturing, eases installation, and enhances everyday usability, blending the elegance of the past with the convenience of the present.

I am confident that Victoria Revamped will inspire a revival of traditional Victorian awnings, restoring an exceptional piece of British heritage from the bustling streets of Manchester to the quaint villages of Kent.”



*Ahmad Al-Shakarchy*

Ahmad Al-Shakarchy  
**Founder**



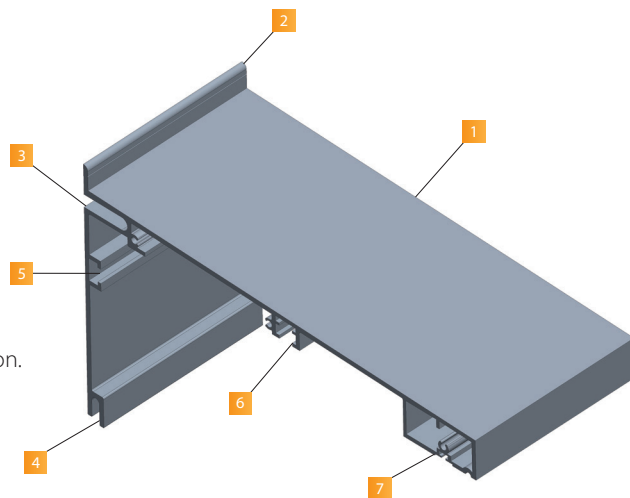




# IMPROVEMENTS

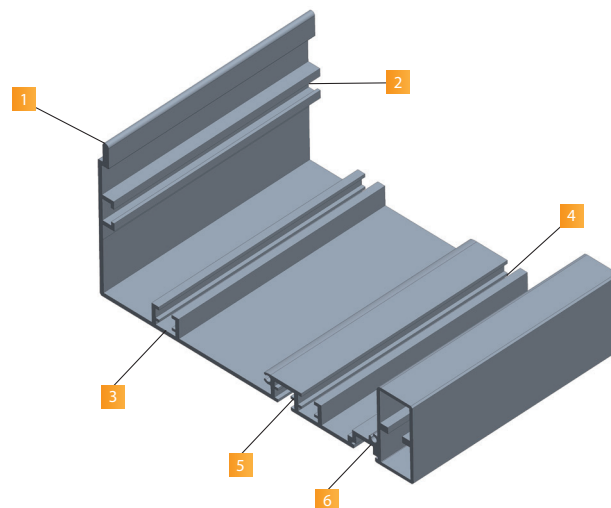
## TOP CASSETTE

- 1 **Top Roof** - sloped to disperse rainwater effectively.
- 2 **Kick Back** - to prevent rainwater leaks.
- 3 **Hanging Channel** - to enable an easier installation method.
- 4 **Joining Slot** - to connect the top cassette to the bottom cassette.
- 5 6 **Fixing Channels** - to attach inner brace brackets.
- 7 **Rubber Channel** - to attach the D-seal which allows for a soft close function.



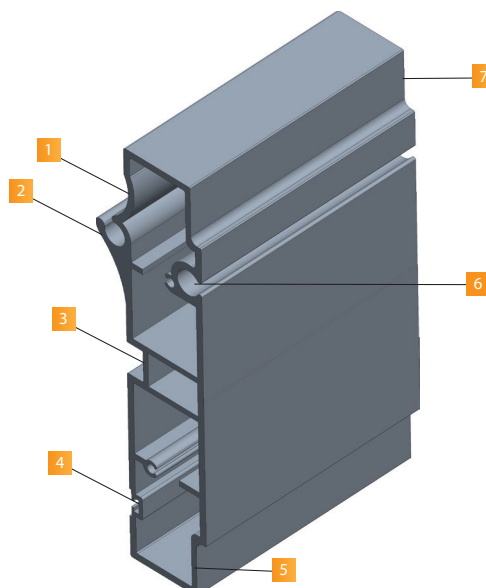
## BOTTOM CASSETTE

- 1 **Joining Lip** - to connect the bottom cassette to the top cassette.
- 2 3 4 **Fixing Channel** - to attach inner brace brackets.
- 5 **Channel** - to hold the arm chain and hang additional accessories.
- 6 **LED Channel** - to hold the LED strip and diffuser.



## FRONT BAR

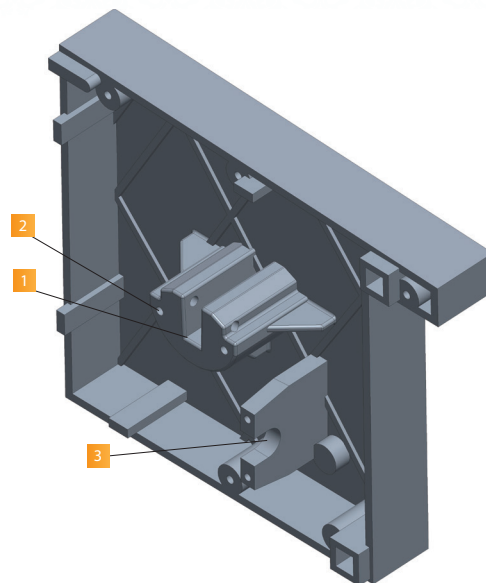
- 1 **Gutter** - to disperse rainwater effectively.
- 2 **Insert Channel** - to attach the cover to the front bar.
- 3 **Fixing Channel** - to connect the arm flags and pull down plate.
- 4 **Rubber Channel** - to attach the D-seal which allows for a soft close function.
- 5 7 **Design Detail** - to maintain the original routed look.
- 6 **Insert Channel** - to attach the valance to the front bar.





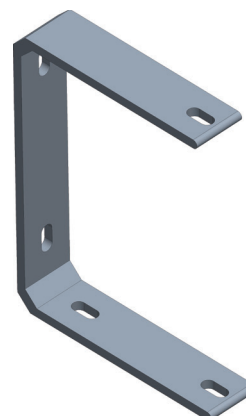
## BOX SIDE CAP

- 1 **Roller Pin Slot** - built-in bracket for the spring pin.
- 2 **Threaded Hole** - built-in mounting points for the motor bracket.
- 3 **Hydraulic house** - built-in bracket for attaching the hydraulic.



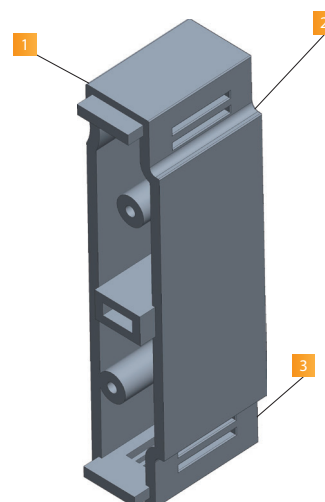
## INNER BRACE BRACKET

- 1 **One piece extruded aluminium**: to join the top and bottom cassette securely together.



## FRONT BAR SIDE CAP

- 1 **One piece cast aluminium** – to cap the end of the front bar for a sleek finish.
- 2 **3 Vents**: to disperse rainwater effectively.



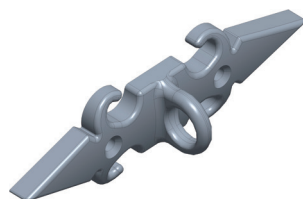
# IMPROVEMENTS

## CAST IRONMONGERY PARTS

All cast ironmongery parts have been meticulously redesigned with elegant traditional English ornate details and fleur-de-lis accents. These parts now feature extended footprints, extra fixing points, and integrated countersunk and lock grub screw holes, providing a more secure fitting.



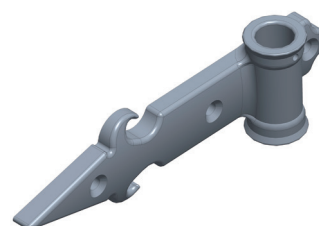
Pull Down Hook



Pull Down Plate



Arm Shoe



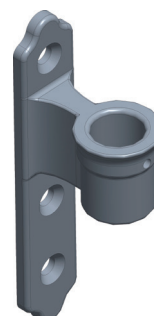
Arm Flag



Slider Bracket



Hinge Bracket



Slider Socket

## SMALL COMPONENTS



### Chain and Carabiner

Upgraded to a stainless steel chain with smaller links and a new screw lock carabiner for a more seamless installation and easier adjustments.



### Pin & Cable

Upgraded to stainless steel pin and high tension PU coated cable.



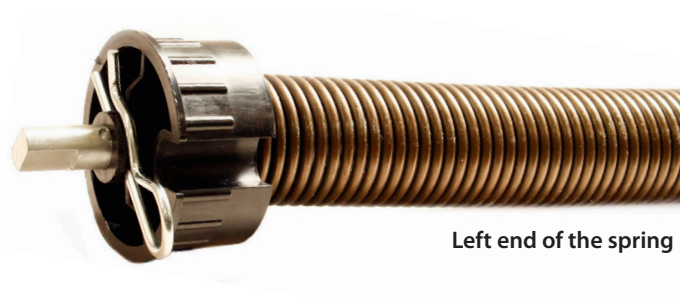
### Eye Bolt Inner Plate

Slid into the dedicated channel and locked into place on the underside of the box, making the chain connection more secure.



## SPRING & DUMMY

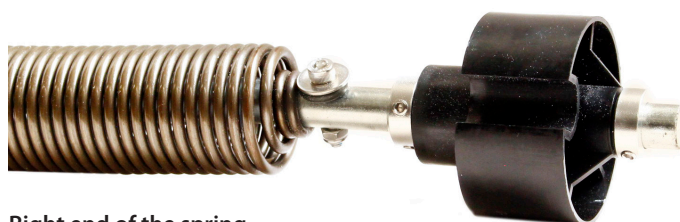
New Spring and Dummy Assembly features redesigned adaptors that fit into standard 80mm diameter aluminium roller tubes eliminating the need to stock different tube types. Additionally, the covers no longer require to be riveted onto the roller tube instead they can be easily slid on through the standard tube's designated insert channels.



Left end of the spring



Dummy



Right end of the spring

# INNOVATING FOR EFFICIENCY AND VALUE

**Faster Production:** By switching from soft and hardwood to aluminium, we've accelerated manufacturing by up to 50%, streamlining assembly and cutting down turnaround time. The simplified process also allows quick training for workers without carpentry skills.

**Improved Operability:** Our rust-resistant stainless steel slider ensures smooth, jam-free operation, making the Victorian awning easy for anyone to use.

**Enhanced Durability:** Aluminium construction, paired with rust-resistant powder coating, eliminates the need for paint and prevents wood rot, significantly extending the lifespan and reducing maintenance.

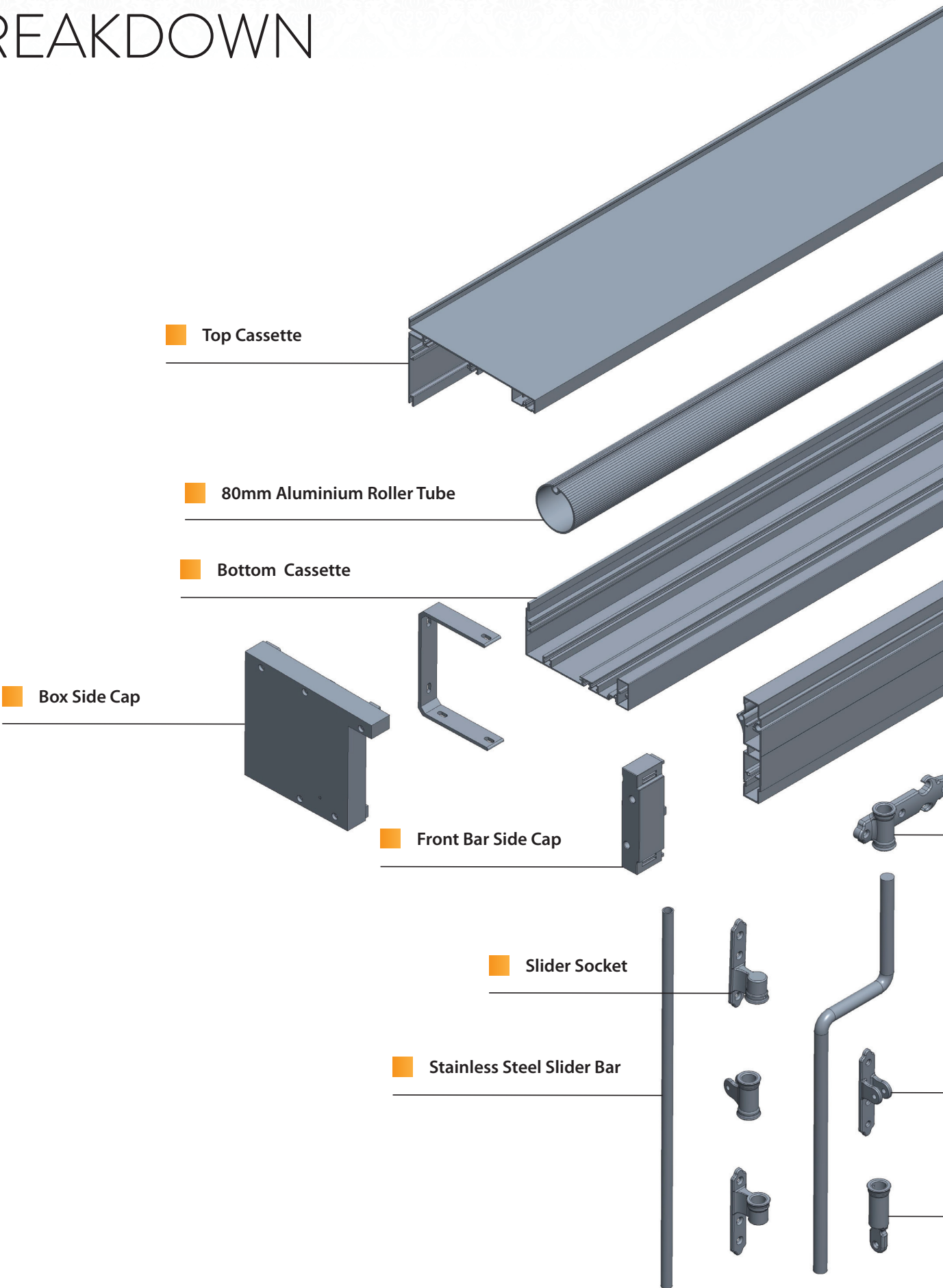
**Cost-Effective Design:** With faster assembly, easier installation, and reduced reliance on specialised skills, our new materials lower labour costs, delivering greater value to you.

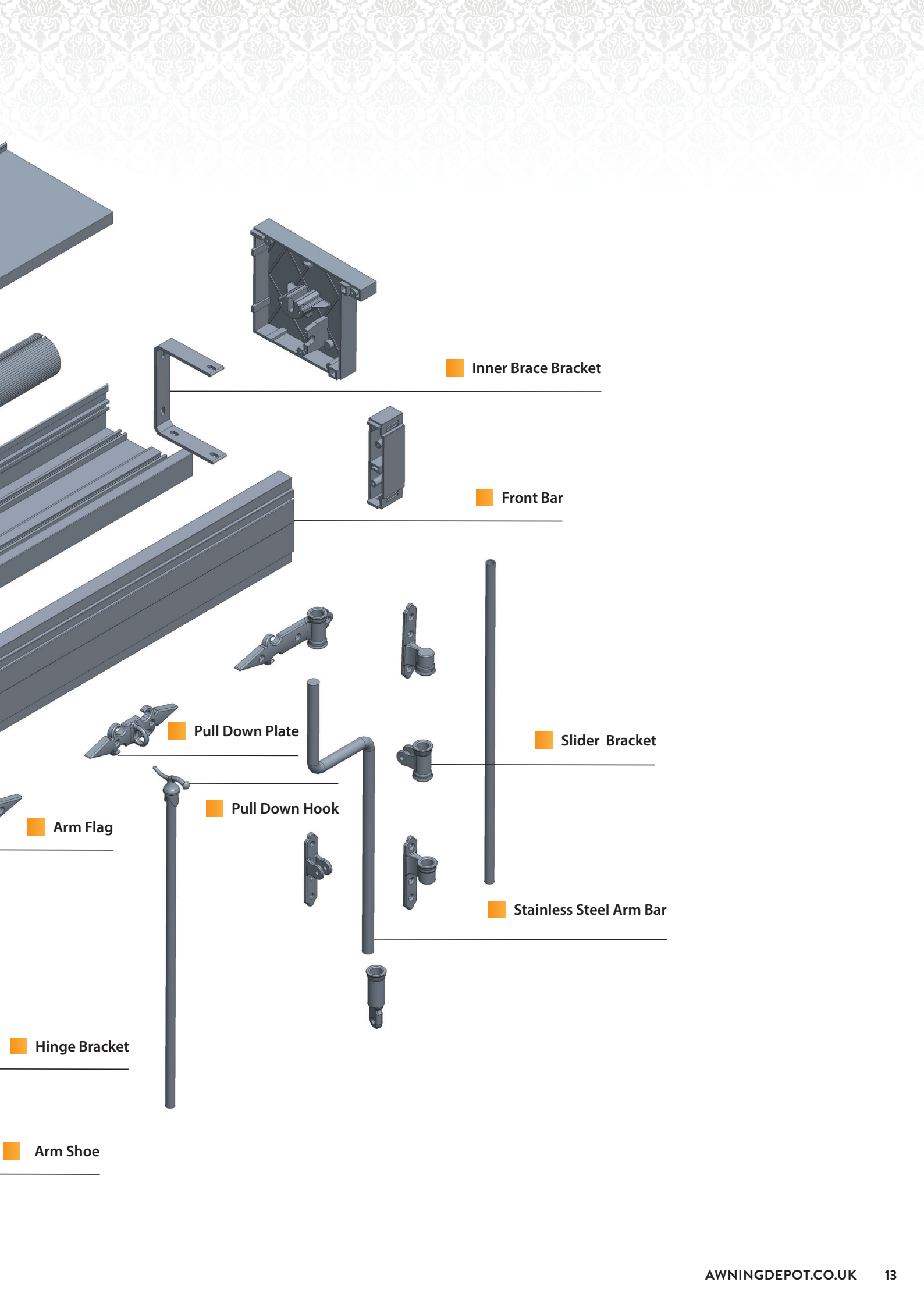






# COMPONENT BREAKDOWN





Inner Brace Bracket

Front Bar

Pull Down Plate

Slider Bracket

Pull Down Hook

Stainless Steel Arm Bar

Arm Flag

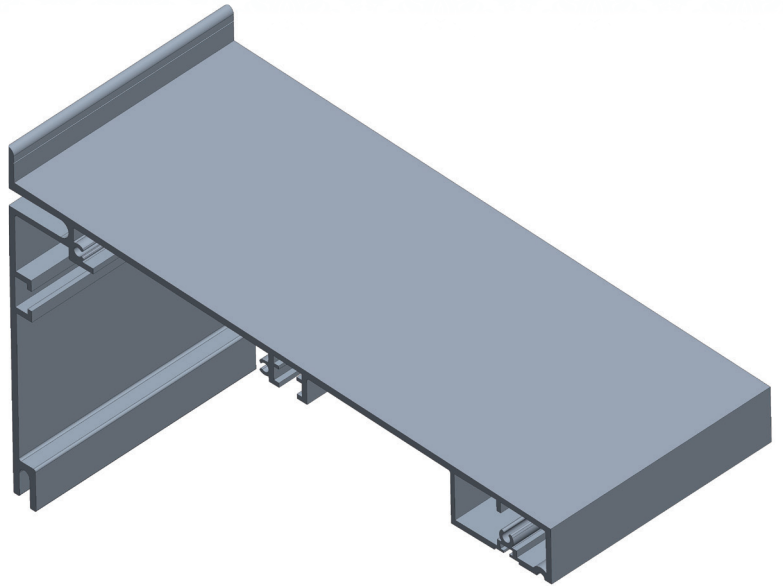
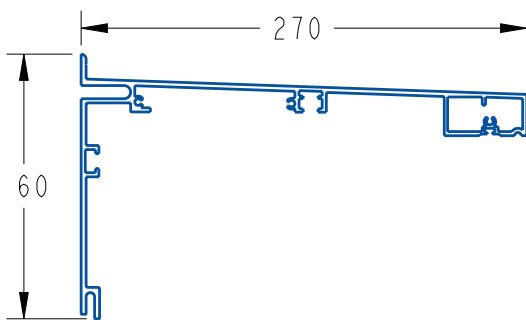
Hinge Bracket

Arm Shoe

# TOP CASSETTE

## OPTIONS

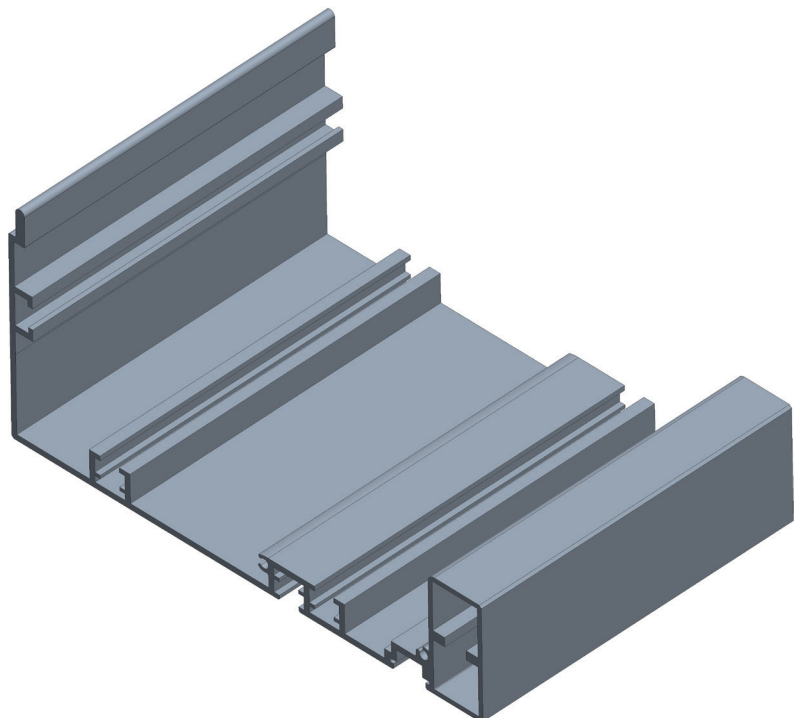
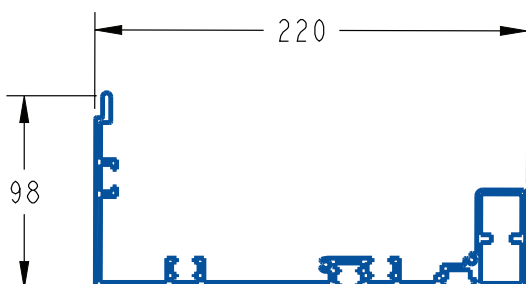
- **Available Length:** 4/5/6m
- **Colour:** Mill finish
- **Weight:** 6kg per meter



# BOTTOM CASSETTE

## OPTIONS

- **Available Length:** 4/5/6m
- **Colour:** Mill finish
- **Weight:** 2kg per meter

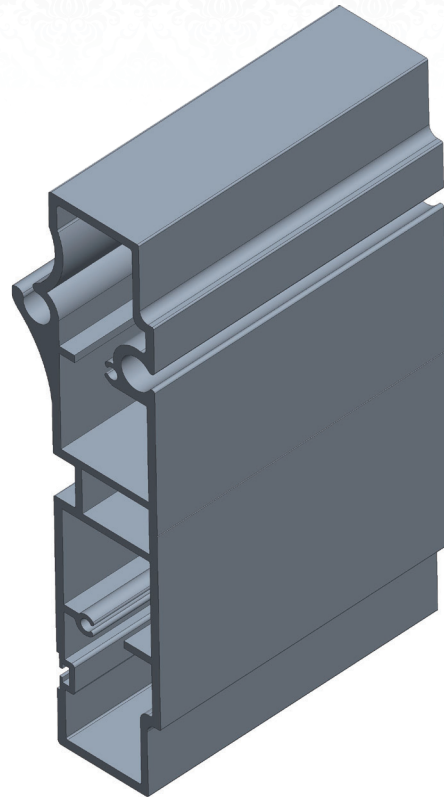
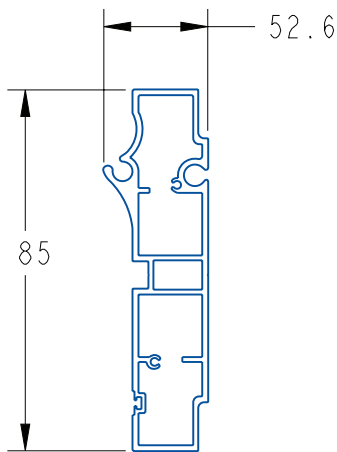




# FRONT BAR

## OPTIONS

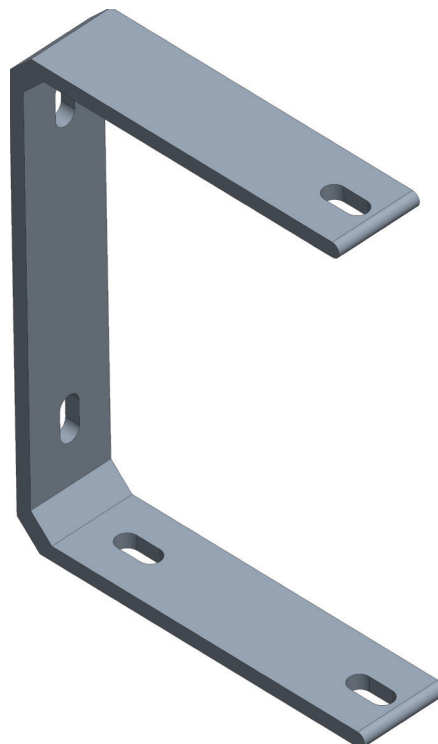
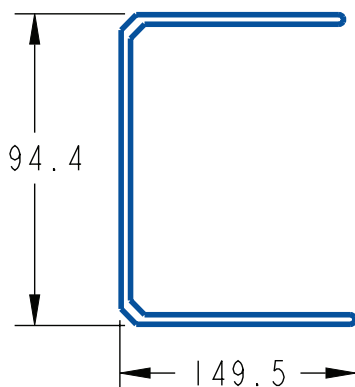
- **Available Length:** 4/5/6m
- **Colour:** Mill finish
- **Weight:** 2kg per meter



# INNER BRACE BRACKET

## OPTIONS

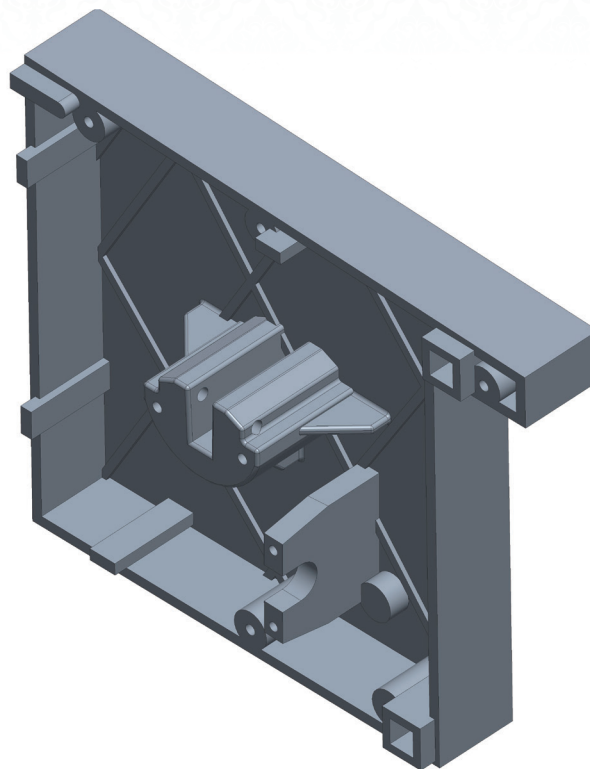
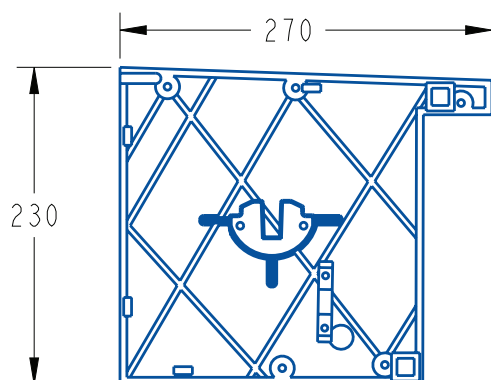
- **Available Size:** Standard
- **Colour:** Mill finish
- **Weight:** 0.25kg per unit



## BOX SIDE CAP - LEFT & RIGHT

### OPTIONS

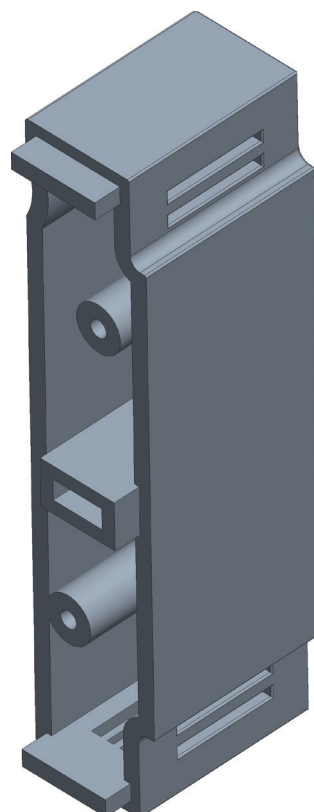
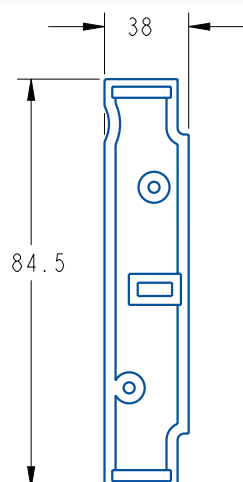
- **Available Size:** Standard
- **Colour:** Mill finish
- **Weight:** 2kg per unit



## FRONT BAR SIDE CAP - LEFT & RIGHT

### OPTIONS

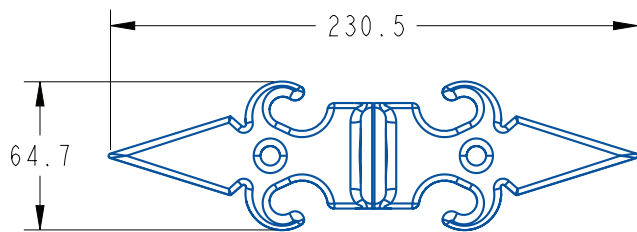
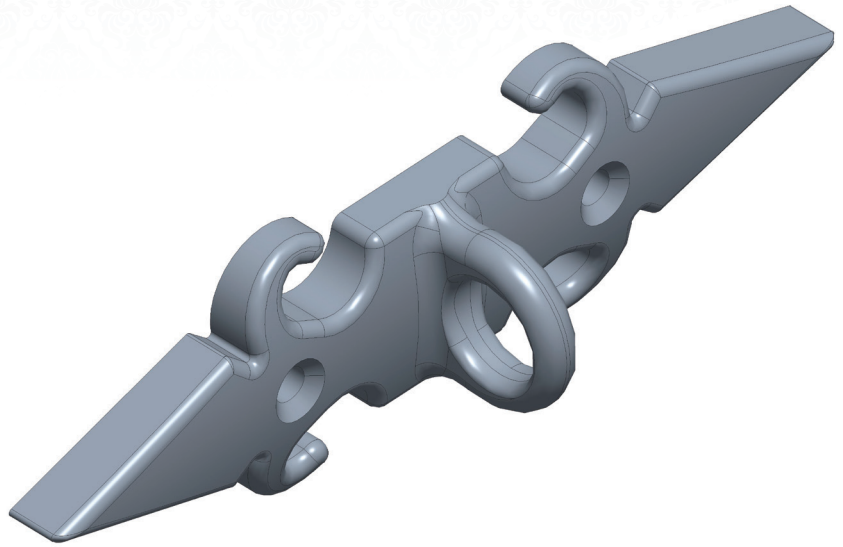
- **Available Size:** Standard
- **Colour:** Mill finish
- **Weight:** 0.47kg per unit



# PULL DOWN PLATE

## OPTIONS

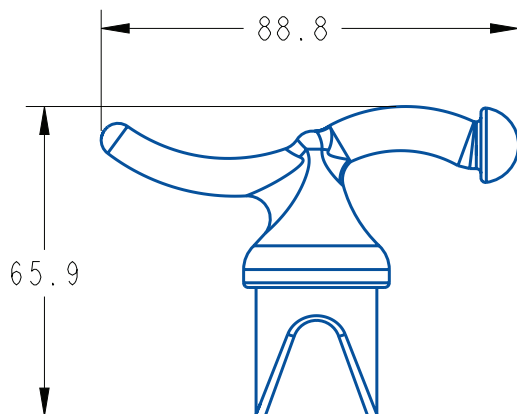
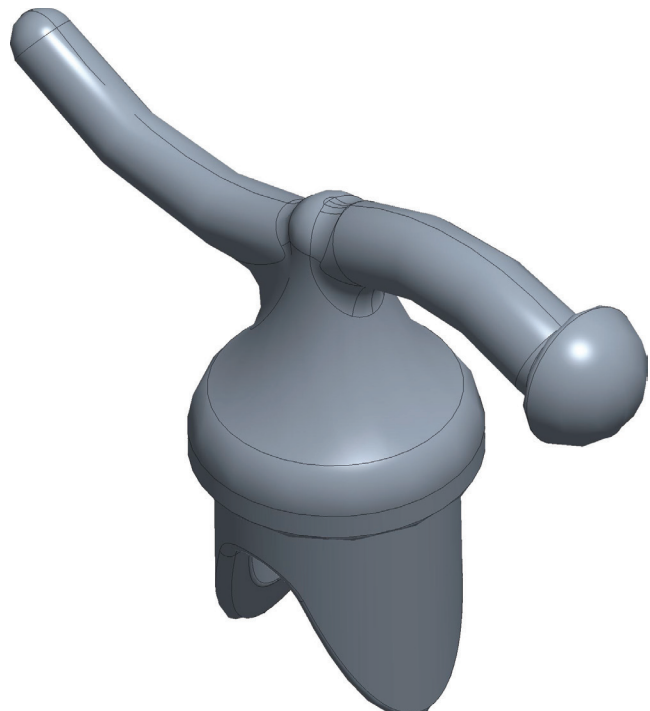
- **Available Size:** Standard
- **Colour:** Matt Black
- **Weight:** 1kg per unit



# PULL DOWN HOOK

## OPTIONS

- **Available Size:** Standard
- **Colour:** Matt Black
- **Weight:** 0.15kg per unit

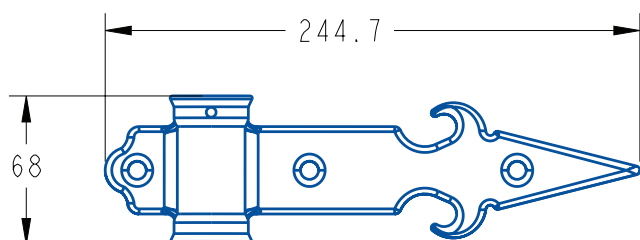
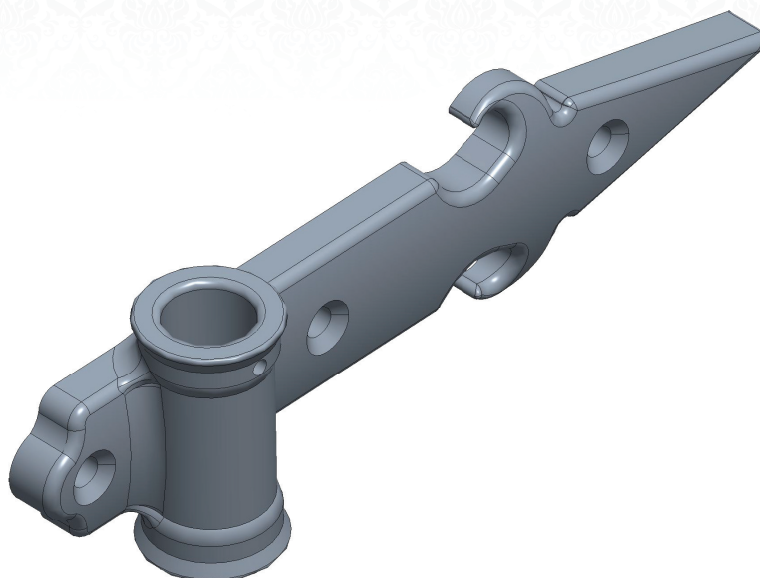




# ARM FLAG - LEFT & RIGHT

## OPTIONS

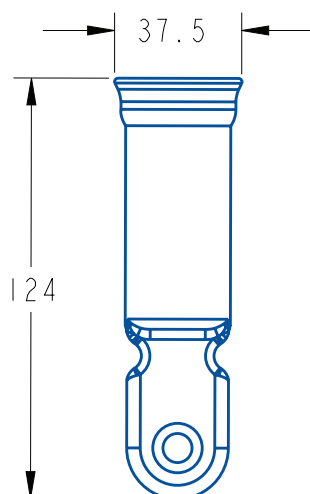
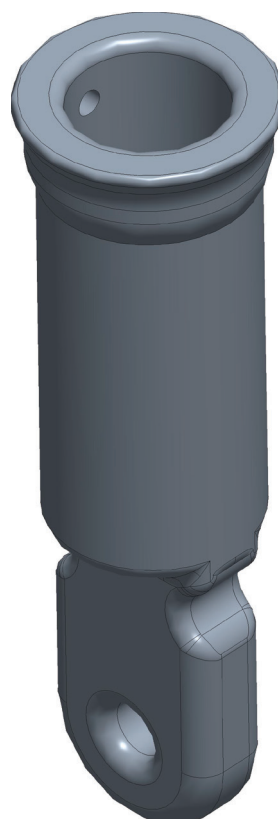
- **Available Size:** Standard
- **Colour:** Matt Black
- **Weight:** 1kg per unit



# ARM SHOE

## OPTIONS

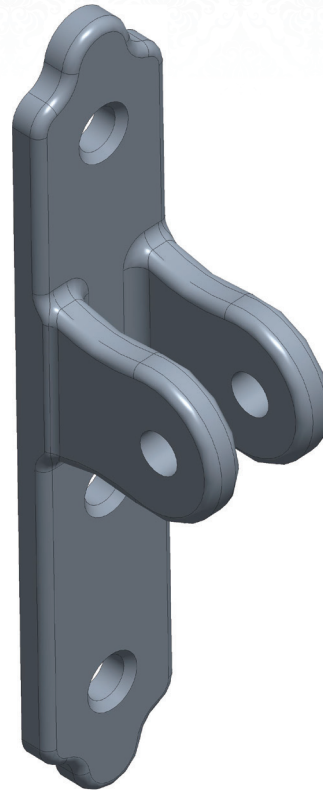
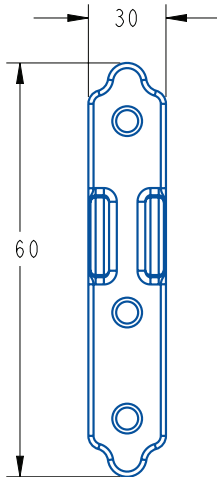
- **Available Size:** Standard
- **Colour:** Matt Black
- **Weight:** 0.38kg per unit



# HINGE BRACKET

## OPTIONS

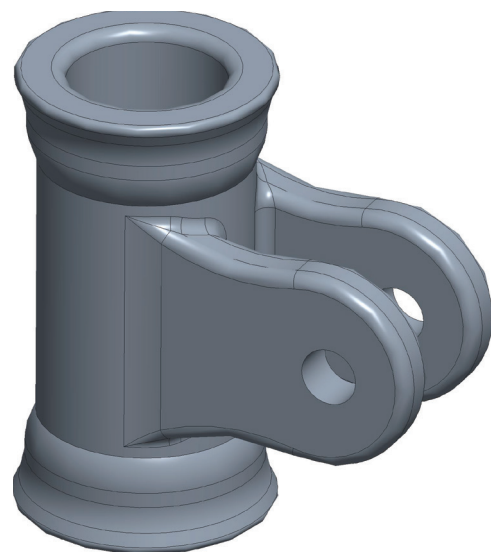
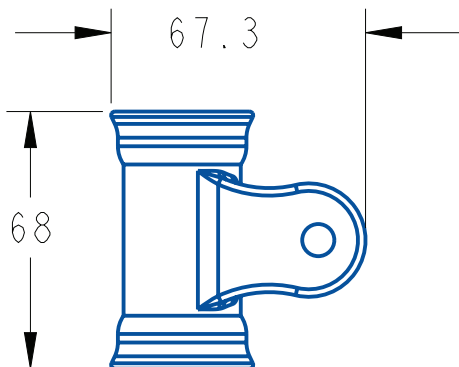
- **Available Size:** Standard
- **Colour:** Matt Black
- **Weight:** 0.32kg per unit



# SLIDER BRACKET

## OPTIONS

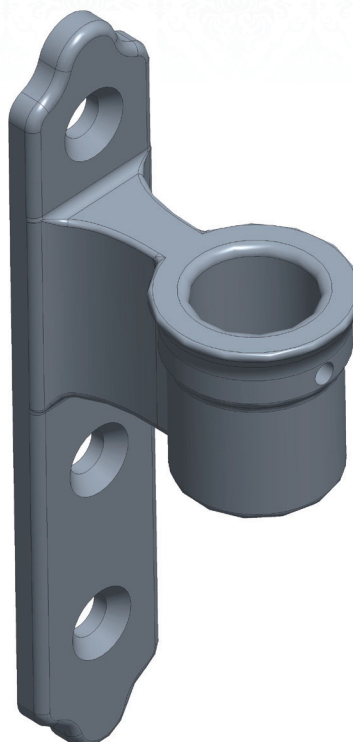
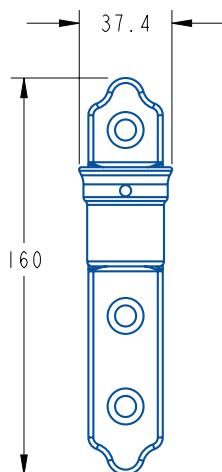
- **Available Size:** Standard
- **Colour:** Matt Black
- **Weight:** 0.33kg per unit



# SLIDER SOCKET

## OPTIONS

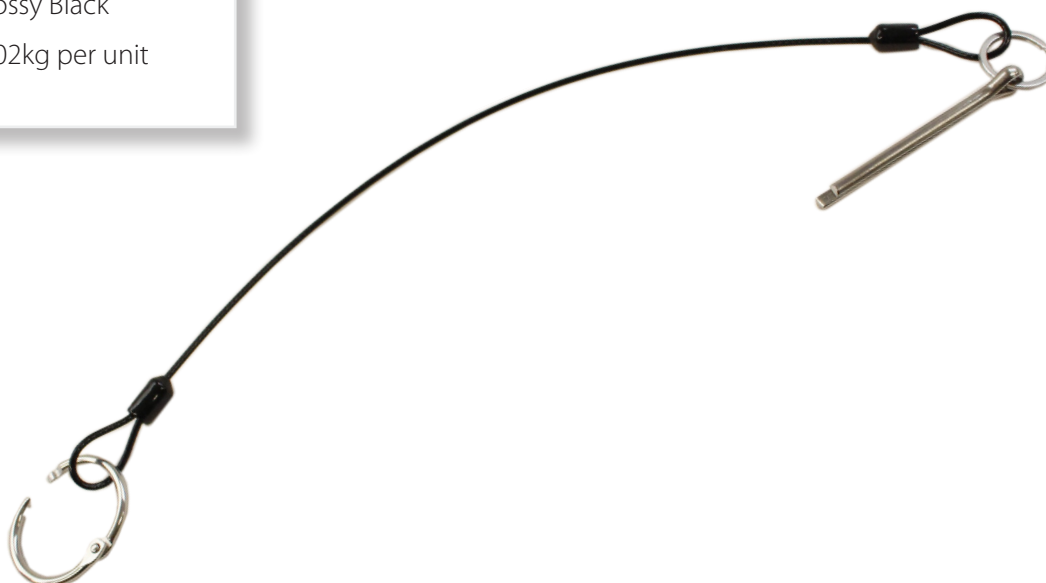
- **Available Size:** Standard
- **Colour:** Matt Black
- **Weight:** 0.44kg per unit



# PIN & CABLE WITH FIXED CHAIN RING

## OPTIONS

- **Available Size:** Standard
- **Colour:** Glossy Black
- **Weight:** 0.02kg per unit





# SPRING MINI

## OPTIONS

- **Spring Length:** 800mm
- **Total Length:** 1175mm
- **Colour:** Standard
- **Weight:** 7.3kg per unit



---

# SPRING MAXI

## OPTIONS

- **Spring Length:** 1500mm
- **Total Length:** 2035mm
- **Colour:** Standard
- **Weight:** 13kg per unit



# DUMMY

## OPTIONS

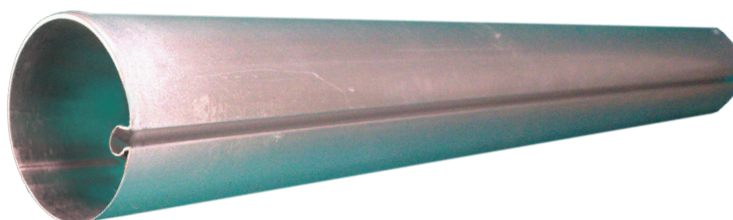
- **Available Size:** Standard
- **Colour:** Standard
- **Weight:** 1kg per unit



# ALUMINIUM ROLLER TUBE - 80MM

## OPTIONS

- **Available Length:** 6m
- **Colour:** Standard
- **Weight:** 16kg per unit



# CHAIN FRONT CONNECTOR

## OPTIONS

- **Available Size:** 38x23x12mm
- **Colour:** Matt Black
- **Weight:** 0.06kg per unit



# STAINLESS STEEL EYE BOLT

## OPTIONS

- **Available Size:** M8x12mm
- **Colour:** Standard
- **Weight:** 0.3kg per unit



# CARABINER HOOK SCREW LOCK QUICK LINK

## OPTIONS

- **Available Size:** 6mm
- **Colour:** Standard
- **Weight:** 0.2kg per unit



---

# EYE BOLT INNER PLATE

## OPTIONS

- **Available Size:** M8x90x12mm
- **Colour:** Bright zinc plated
- **Weight:** 0.5kg per unit



---

# CHAIN

## OPTIONS

- **Available Size:** 25mm
- **Colour:** Matt Black
- **Weight:** 0.33kg per meter





# VICTORIA REVAMPED WITH FIXED HINGE



## TECHNICAL INFO

- **Extendable Design:** Integrated jointing channels within the box and front bar allow for easy extension beyond 6 meters by merging two sections seamlessly.
- **Box:** Crafted from extruded aluminium, featuring internal channels that enhance strength while securely joining the top and bottom sections.
- **Front Bar:** Crafted from a single piece of extruded aluminium for superior durability and resistance to bending. The traditional tacking lath is replaced with a convenient insert channel and the P section is incorporated in front bar, allowing for effortless valance insertion.
- **Arms:** Forged from 22mm stainless steel, the arms include high quality arm flags and shoes, ensuring strength and longevity.
- **Roller tube:** Box is designed for compatibility with a standard 80mm aluminium roller tube that features a groove for quick and secure attachment of covers with a 6mm insert.
- **Spring Mechanism:** Available in two re-engineered sizes, ensuring balanced weight distribution. The Spring Maxi is recommended for awnings wider than 5 meters with a projection of 2 meters or more. The spring is encased in a plastic tube to minimize noise during awning operation.
- **Operation:** Available in manual pull-down and motorised operation options.

# MANUAL PULL DOWN OR MOTORISED

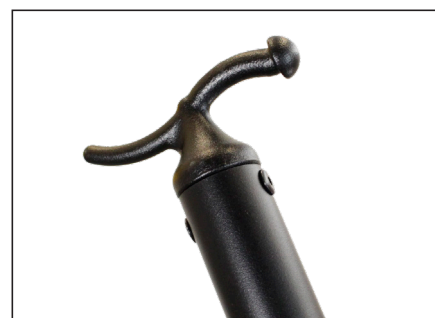


# VICTORIA REVAMPED

## WITH STAINLESS STEEL SLIDER



**Stainless Steel Sliders:** The redesigned slider components improve the overall fixture stability and offer smoother movement. Pre-drilled grub screw holes eliminate the need for welding.





# MANUAL PULL DOWN



## TECHNICAL INFO

- **Extendable Design:** Integrated jointing channels within the box and front bar allow for easy extension beyond 6 meters by merging two sections seamlessly.
- **Box:** Crafted from extruded aluminium, featuring internal channels that enhance strength while securely joining the top and bottom sections.
- **Front Bar:** Crafted from a single piece of extruded aluminium for superior durability and resistance to bending. The traditional tacking lath is replaced with a convenient insert channel and the P section is incorporated in front bar, allowing for effortless valance insertion.
- **Arms:** Forged from 22mm stainless steel, the arms include high quality arm flags and shoes, ensuring strength and longevity.
- **Roller tube:** Box is designed for compatibility with a standard 80mm aluminium roller tube that features a groove for quick and secure attachment of covers with a 6mm insert.
- **Spring Mechanism:** Available in two re-engineered sizes, ensuring balanced weight distribution. The Spring Maxi is recommended for awnings wider than 5 meters with a projection of 2 meters or more. The spring is encased in a plastic tube to minimize noise during awning operation.
- **Operation:** Available in manual pull-down only.

# OPTIONS

- **Width Range:** Available in sizes from 1.5m to 6m wide.
- **Arm Length:** Options range from 1m to 2.2m.
- **Box & Front Bar Finish:** Can be powder coated in a wide selection of K7 RAL colours.
- **Fabric:** Acrylic & polyester options are available in 100's of colours from top European suppliers.
- **Valance:** Available in both straight & wavy designs.



# ADD-ONS

- **Signwriting:** Logos and text can be printed on the main cover and valance.
- **Curtains:** Side and front curtains can be attached.
- **Remote Controls:** 1 & 15 Channel remote controls are available.
- **Motion Sensor:** Motion sensors are available for motorised awnings in black or white.
- **P-Box:** Wifi bridge is available with or without LED for motorised awnings.



MOTION SENSOR

DD510H / HF



P-BOX WITH LED

DD7006A

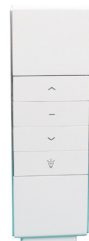
# OPERATION OPTIONS

## MANUAL

### 1 Manual operation with integrated LED lighting



+



+



AC CONTROLLER

DD721A

RC1 LED

DC1600A

LED STRIP

## MOTORISED

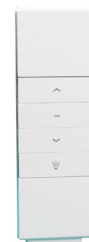
### 1 Motorised operation with manual override



+



+



NANNA 100

DM59RM/SF027-100-9

AC CONTROLLER

DD721A

RC1 LED

DD1600HE

### 2 Motorised operation with no LED



+



NANNA 100

DM59RM/SF027-100-9

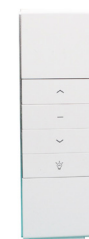
RC1

DD1600

### 3 Motorised operation with self-tensioning feature



+



UTU

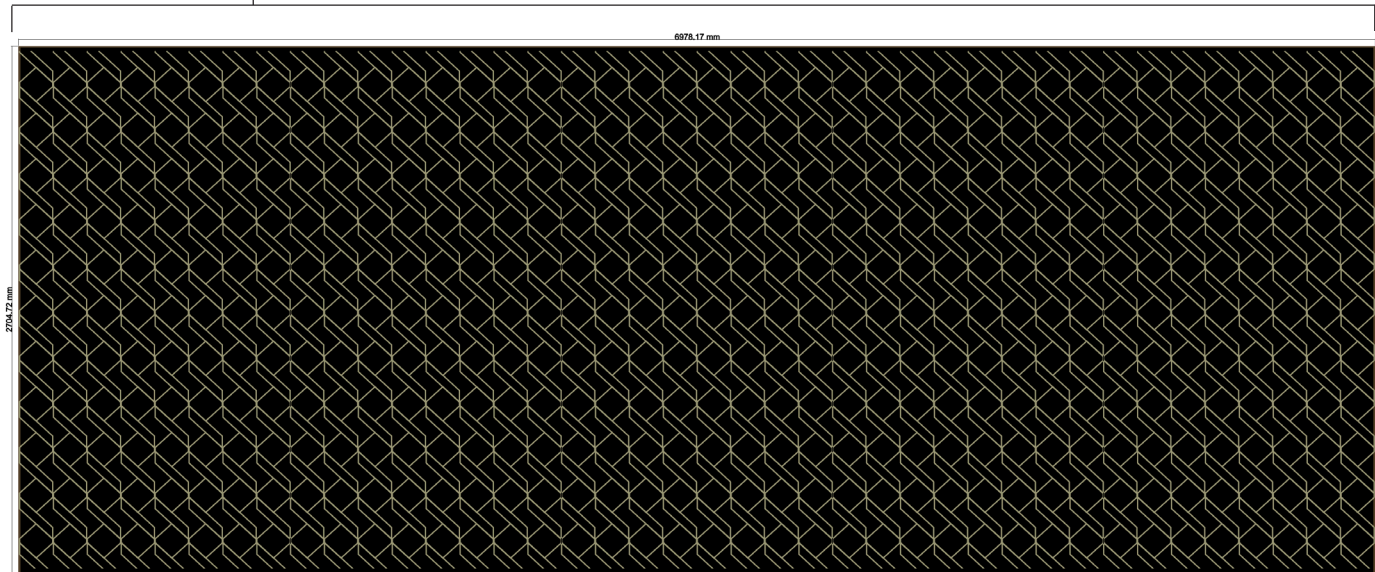
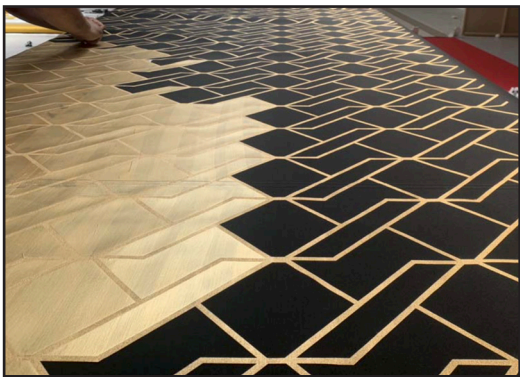
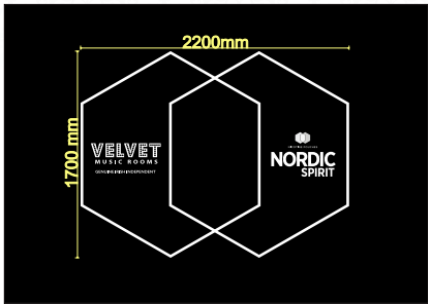
DM45ED/SD069-50/12

RC1 LED

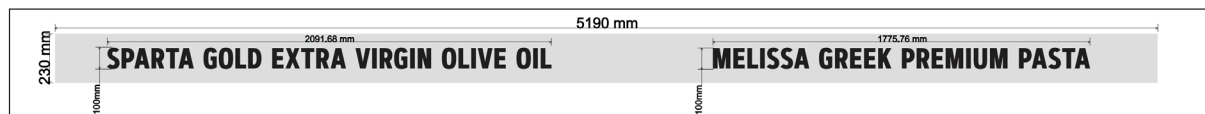
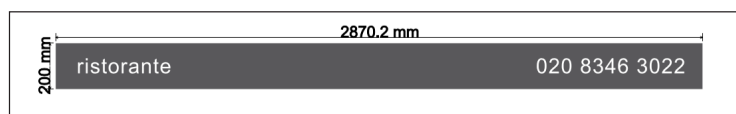
DD1600HE



# SIGNWRITING











## 5 YEAR WARRANTY

This product come with a 5 year warranty



UNIT 19, HORNET CLOSE, PYSONS ROAD INDUSTRIAL ESTATE, BROADSTAIRS, CT10 2YD  
TEL: 01843 821 905 EMAIL: [INFO@AWNINGDEPOT.CO.UK](mailto:INFO@AWNINGDEPOT.CO.UK)

[WWW.AWNINGDEPOT.CO.UK](http://WWW.AWNINGDEPOT.CO.UK)