

awningdepot



CONSERVATORY
RICHMOND

CONSERVATORY



TECHNICAL INFO

Frame: Made from aluminium extrusions with aluminium parts and components.

Height:

- Fixed guide rail roof mounting bracket: up to 1000mm.
- Adjustable guide rail roof mounting bracket: 90 to 175mm.

Fabric: Acrylic or Polyester available

Operation: Motorised using powerful 50Nm motor, with mechanical limit and emergency override.



ADJUSTABLE BRACKET

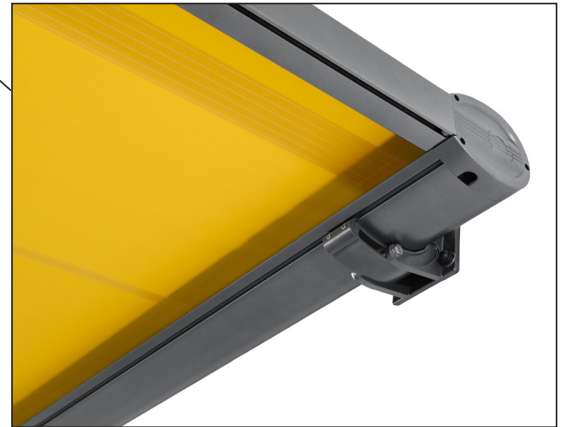


FREE STANDING



FIXED BRACKET

RICHMOND



OPTIONS

Installation:

- Free Standing.
- Over/Under Roof Mounted.

Width: 2000mm to 5000mm wide.

Available Projection: 3000, 3500, and 4000mm

Pitch:

- Free Standing Minimum of 15 degrees.
- Over Roof Mounted: Minimum of 10 degrees.
- Under Roof Mounted: Minimum of 5 degrees.

Frame Colour: Available in White and Anthracite Grey as standard.

Fabric Colour: 100's of colours from top European suppliers.

Additional Features:

- LED light on cross beam.



All our products come with a warranty



UNIT 19, HORNET CLOSE
PYSONS ROAD INDUSTRIAL ESTATE
BROADSTAIRS, CT10 2YD

TEL: 01843 821 905
EMAIL: INFO@AWNINGDEPOT.CO.UK

WWW.AWNINGDEPOT.CO.UK