



awningdepot

THE
BABYLON
PERGOLA



PROUDLY MADE &
ASSEMBLED IN THE UK

ABOUT US

Awning Depot is a UK-based manufacturer specializing in custom-designed awnings and canopies. Over the years, we have expanded our product range to include various outdoor living solutions such as pergolas, zip systems, and more. In addition to our product range, we supply motors and traditional awning parts to the industry, catering to both modern and classic designs.

Beyond our competitive pricing, what truly sets us apart, is our comprehensive sign-writing service and bespoke manufacturing process. Every product is meticulously tailored to complement the architectural style and functional needs of your clients, ensuring a perfect blend of form and function for every project.

WHY CHOOSE US?



Quality Assurance



Affordability



Fast Turnaround



UK Warehouse Stock



Technical Support



In-house Steel Fabrication



INDEX

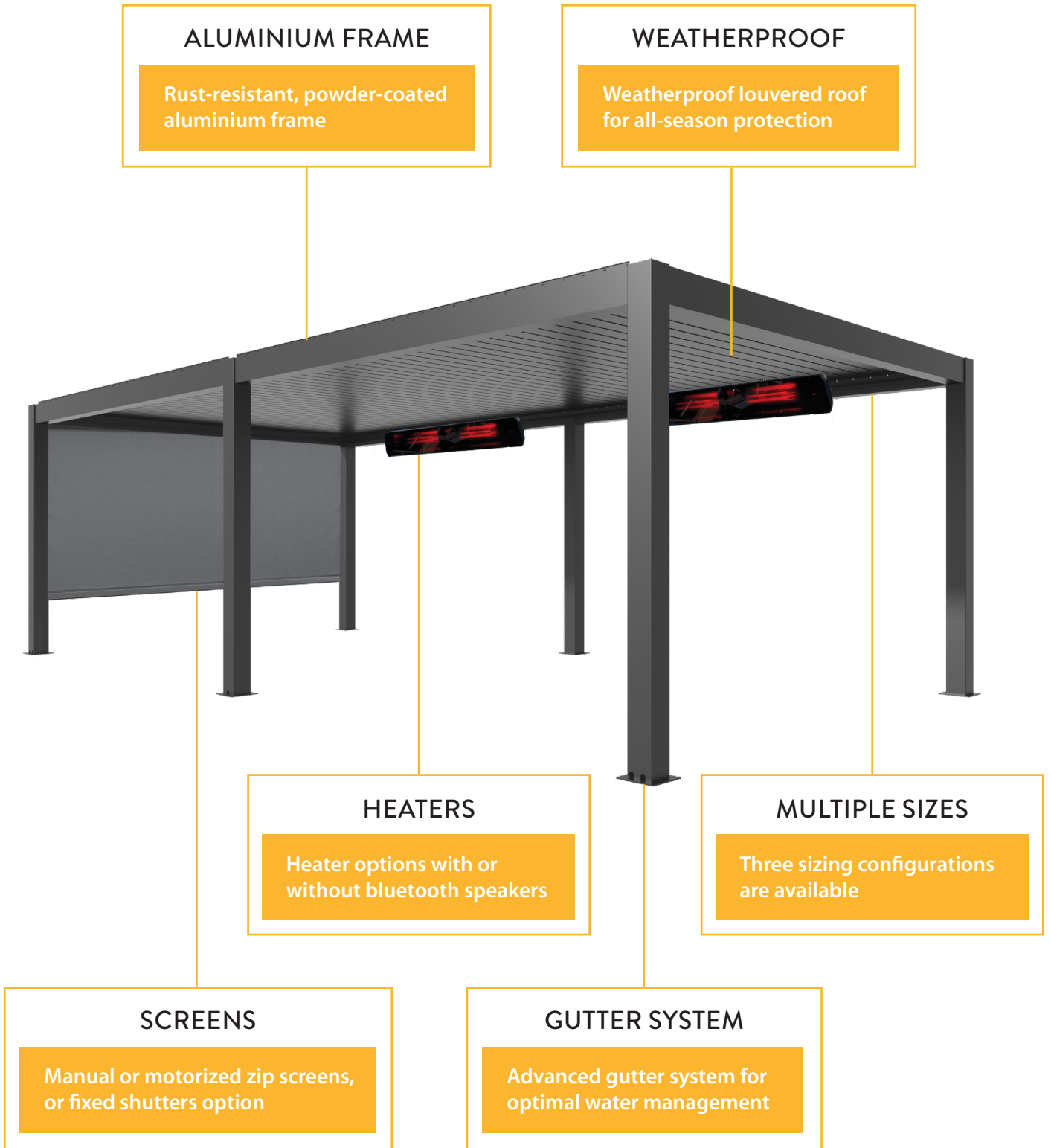
INTRODUCTION	4-5
VERSATILE DESIGN	6-7
TECHNICAL FEATURES	8
SIZE AND DIMENSIONS	9
ADD-ON OPTIONS	10-11

INTRODUCING THE BABYLON PERGOLA

Babylon is a premium motorised aluminium pergola system designed with robust features to withstand year-round weather conditions. With its wide double-layer overlapping louvres and sturdy 150mm square posts, this system ensures exceptional stability and durability. Additionally, it is powered by a waterproof IP67-rated motor with 24V operation offering reliable and safe performance in any setting.

Its sleek, modern design, combined with weatherproof and ventilation features, creates an ideal solution for enhancing any outdoor space including hospitality venues.





VERSATILE DESIGN

Engineered for versatility, the Babylon Pergola range comes in both wall-mounted and freestanding designs, making it adaptable to various residential and commercial environments.



The system also offers perimeter LED lighting in warm white, ideal for creating any ambiance.

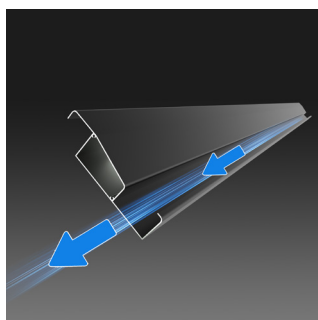


TECHNICAL FEATURES

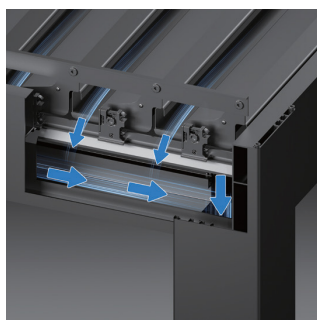
ADVANCED GUTTER SYSTEM

Babylon's design incorporates an innovative hidden drainage system, rainwater is efficiently diverted through blade grooves into an internal gutter, which channels water down the posts and out at the base, ensuring complete waterproof protection.

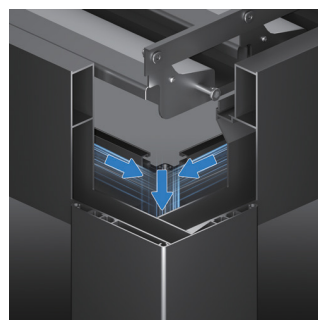
This intelligent design not only separates water drainage and electrical wiring, ensuring maximum safety and efficiency but it also keeps outdoor spaces dry and usable during rainy weather.



Louvre grooves facilities water diversion



Water flows into the hidden drainage system



Water is routed through the post



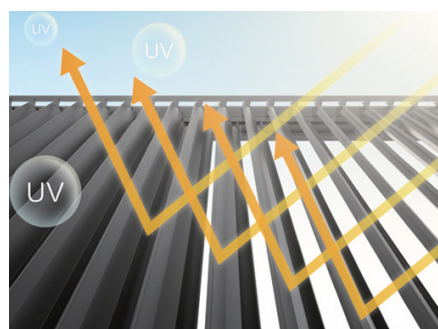
Water exits at the base of the post

LOAD-BEARING STRENGTH

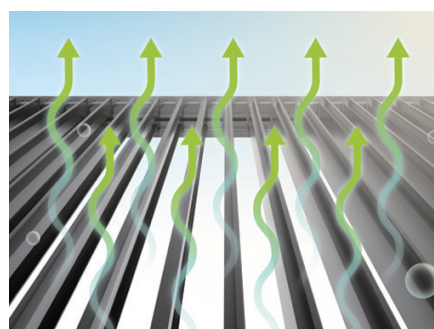
The Babylon Pergola is built to withstand more than just wind and rain—it's also capable of bearing snow loads up to 80kg/m², making it a practical solution for regions with harsh winters. Whether your outdoor space is exposed to snowfall or windy conditions, this pergola maintains its structural integrity, offering reliable performance year-round.

WEATHERPROOF PERFORMANCE

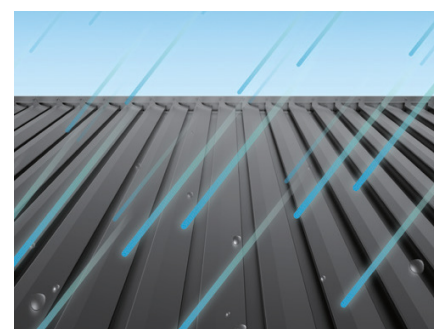
Designed to meet the demands of a variety of weather conditions, the Babylon Pergola features anti-UV panels and rotatable louvres that open up to 90 degrees, allowing complete control over sunlight and airflow with the touch of a button. Its strong wind resistance, rated at 120 km/h (above the Beaufort Scale 10), ensures stability in strong winds, making it ideal for the variable weather conditions across the UK.



UV resistant



Breathable



Weather-resistant

SIZE AND DIMENSIONS

INSTALLATION OPTIONS

Free Standing

Wall Mounted

SIZE OPTIONS

3000x4000mm

3000x5000mm

4000x6000mm

FRAME COLOUR

Anthracite Grey

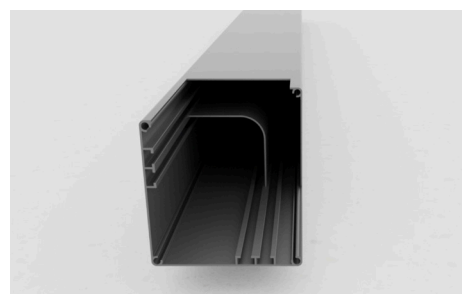
OPERATION

Motorised



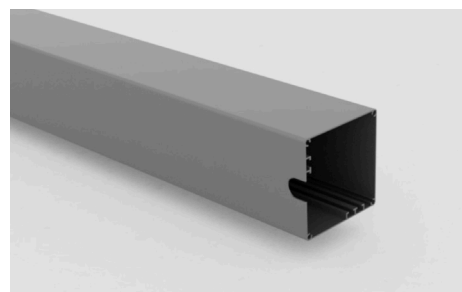
LOUVER

159.9x38x1.3mm



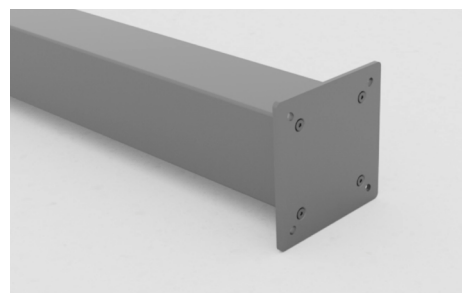
BEAM TOP

190x124.28x2.5mm



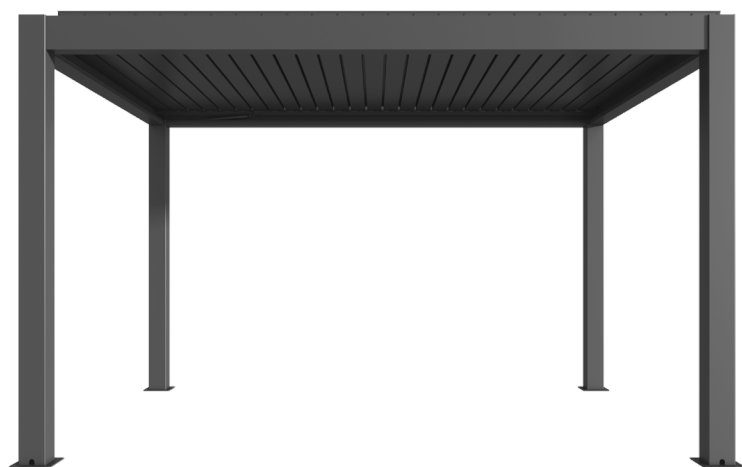
BEAM BOTTOM

190x124.28x2.5mm



POST

150x150x2mm



ADD-ON OPTIONS



ZIP SYSTEM

Fabric:

- Mesh

Operation:

- Motorised
- Manual

LOUVERED FIXED SHUTTER

Frame colour:

- Anthracite Grey

Operation:

- Manual

LIGHTING

- Perimeter LED lighting

HEATER

- Battersea with Bluetooth speaker
- Windsor without Bluetooth speaker

HEATERS

KEY FEATURES

- ✓ Timer on/off 0:00~ 24:00
- ✓ 2 power setting: 75% & 100% power
- ✓ Remote & smart app function
- ✓ 5 seconds fast heating
- ✓ No noise
- ✓ No light no dry
- ✓ Durable with a long life
- ✓ Low carbon energy-saving
- ✓ Convenient and flexible



BATTERSEA

Model	Dimensions (mm)	POWER (W)
BS-IR-1.8	1160*180*77	2200



WINDSOR

	Model	Dimensions (mm)	POWER (W)	COVER AREA (M2)
A	BS-SP-2.4	1870*189*67	2400	25-32
B	BS-2.4	1595*189*67	2400	25-32
C	BS-SP-1.8	1370*189*67	1800	18-25
D	BS-1.8	1095*189*67	1800	18-25

ZIP SYSTEM

TECHNICAL INFO

- **Frame:** Frame made from aluminium extrusion with aluminium parts and components
- **Frame Colour:** Available in anthracite grey as standard
- **Fabric:** Mesh
- **Operation:** Motorised option using powerful 20nm motor or manual
- **Size:** Width 1m to 4m | Height from 1m to 3m





UNIT 19, HORNET CLOSE, PYSONS ROAD INDUSTRIAL ESTATE, BROADSTAIRS, CT10 2YD
TEL: 01843 821 905 EMAIL: INFO@AWNINGDEPOT.CO.UK

WWW.AWNINGDEPOT.CO.UK